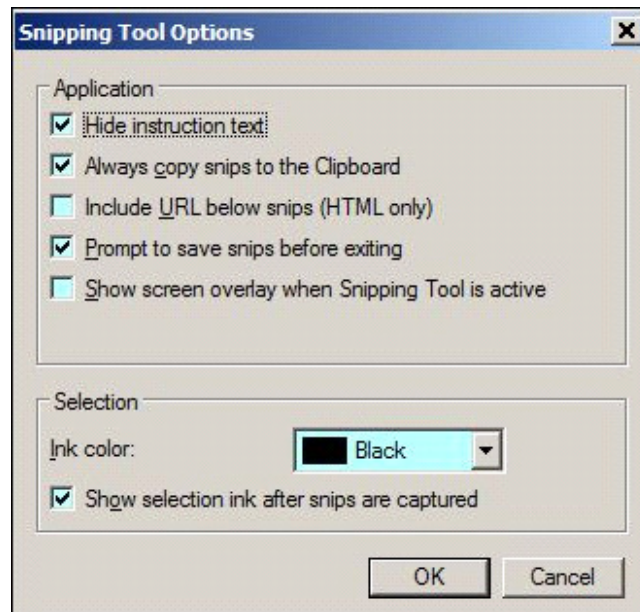


Snipping Tool.

Open it by typing it's name in the start menu's **Search programs and files** box and press Enter



Set your Options as below, then click the drop box next to **New** for shape options.



These are my settings.

When the settings have been made, click **OK** then **New** to make your image. If an error is made click **New** again. If it's ok, click the **x** to close. You will be asked if you want to save it, click yes then name it as you want in any format as it will not need editing before posting it.

Compliments of

